

Online model

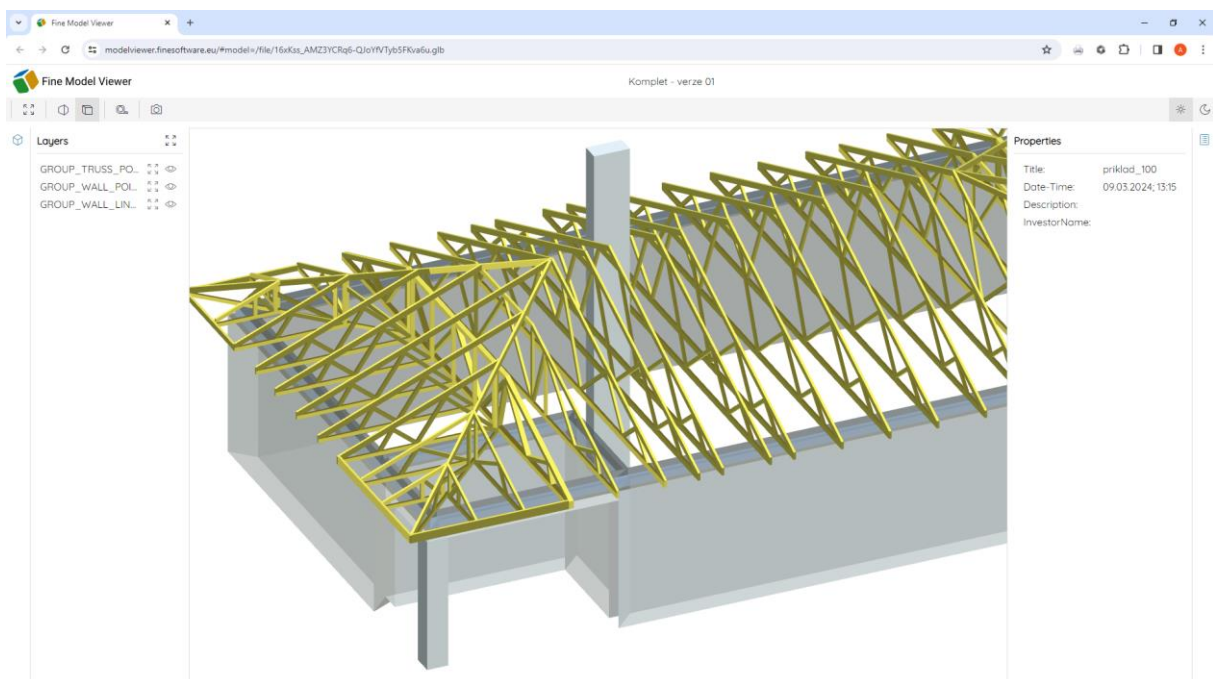
Online model

Program: Truss 3D

File: DEMO_EM01.tr3

This engineering manual introduces a tool of the Truss 3D program that enables the sharing of spatial 3D-models. The 3D model can be viewed in any web browser and on various types of devices (PC, tablet, phone, etc.) without the need to install any additional software. The 3D-model is displayed with the possibility of rotation, zooming and measurement, on the contrary, without the possibility of any editing. In this way, the final model can be presented, but also the project can be shared in various stages of development with the participants (customer, architect, production, assembly, etc.) and thus any design details can be solved more easily.

3D model data is stored on the user's own cloud storage (e.g. Google Drive, etc.).

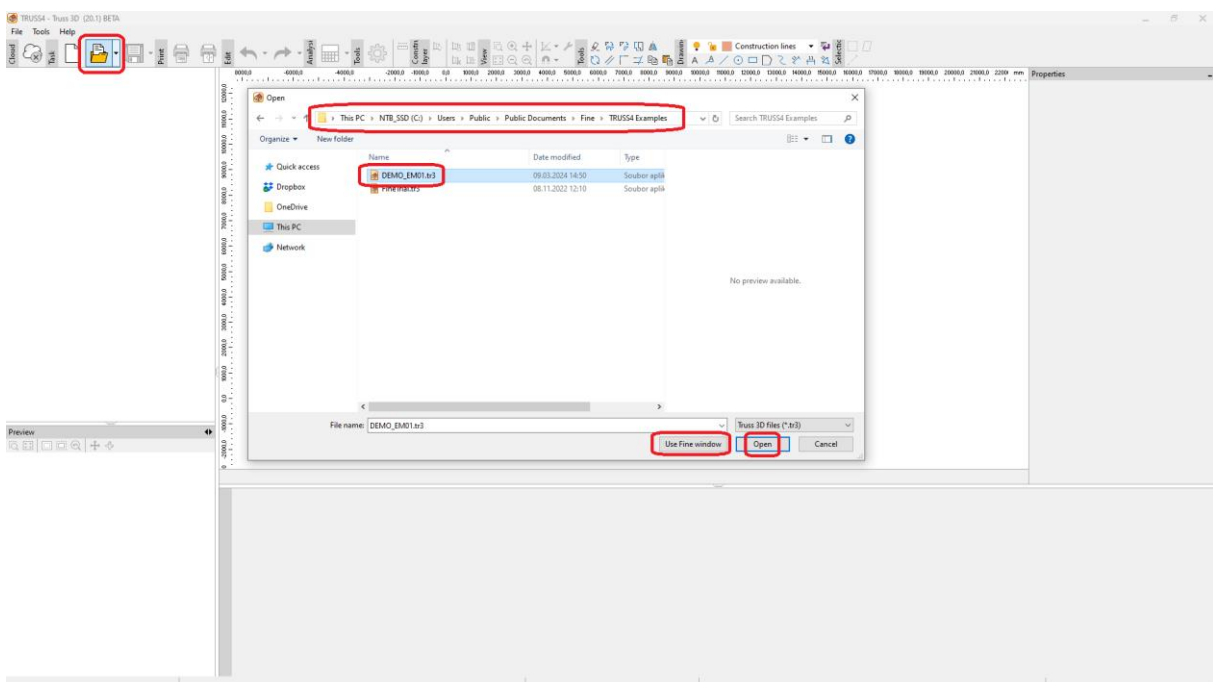
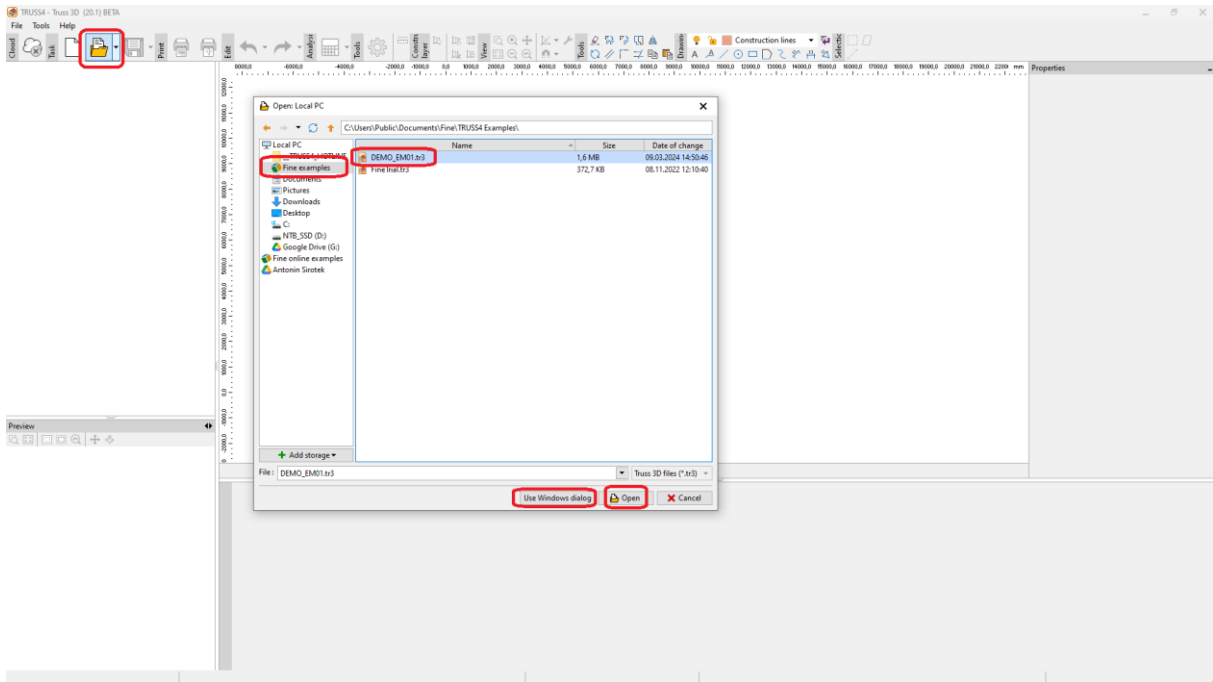


Fine window for opening and saving files

For the purposes of this sample example, we will first open the file "DEMO_EM01.tr3" available in the "Fine examples" folder in the new "Use Fine window", or in the original "Use Windows dialog" in the location:

C:\Users\Public\Documents\Fine\TRUSS4 Examples\DEMO_EM01.tr3

The new "Fine dialog" enables direct writing and reading from selected cloud storages, with which data can be shared within the company. You can switch between the original and new dialog using the "Use Windows dialog"/"Use Fine window" buttons.

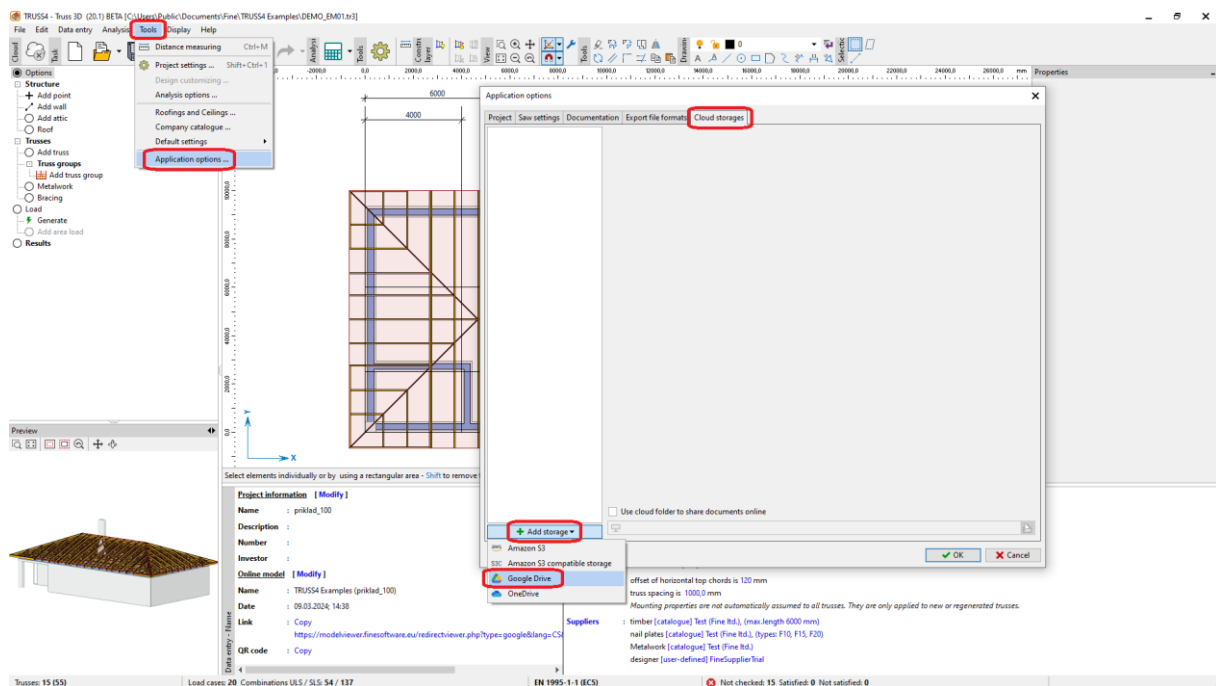


Cloud storage settings

To share public 3D-models (Online model), it is necessary to set up your own cloud storage, where only the public data of the 3D-model will be stored, not the complete data of the TRUSS4 project. The web model only contains data about the geometry of the 3D model, it does not contain any other data.

Currently, the only storage that allows Online model sharing is the "Google Drive". The range of supported repositories will gradually expand.


In the Truss 3D program, we open the "Tools/Application Options..." menu and there the "Cloud storages" tab. Select "Google Drive" using the "Add Storage" button.



And then we proceed using the wizard by entering your own Google account, or one created by you for this purpose, password and verification.

New Google Drive account

Sign in with Google



Sign in

to continue to [GEO5](#)

Email or phone
antonin.sirotek.g@gmail.com

[Forgot email?](#)

Before using this app, you can review GEO5's [privacy policy](#) and [terms of service](#).

Next


English (United States)

[Help](#) [Privacy](#) [Terms](#)


[Reference manual \(online\)](#) [Close](#)

New Google Drive account

Sign in with Google



Welcome

 antonin.sirotek.g@gmail.com

Enter your password
.....

☐ Show password

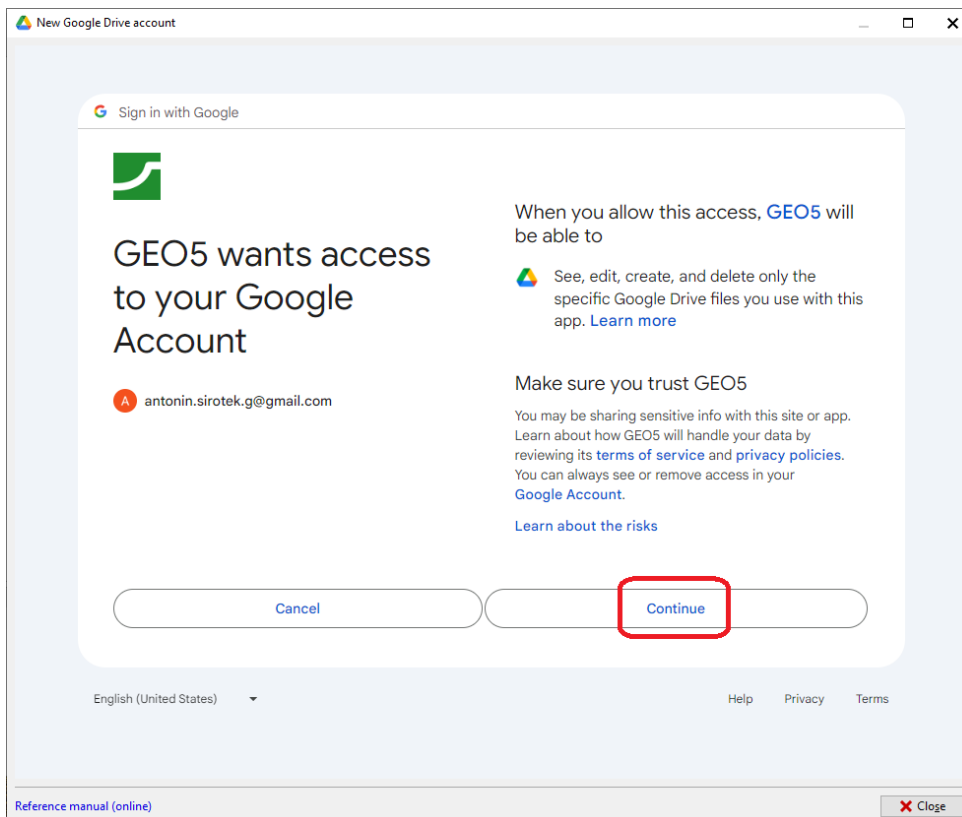
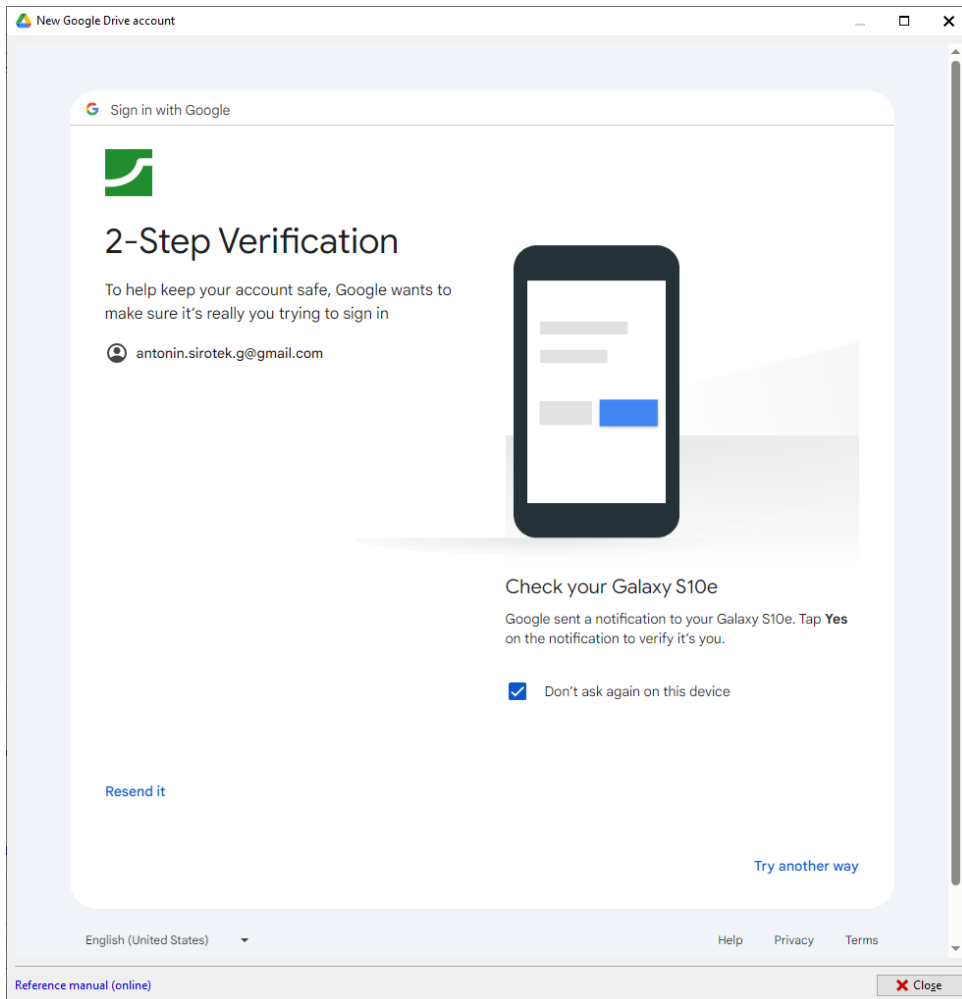
[Forgot password?](#)

Next

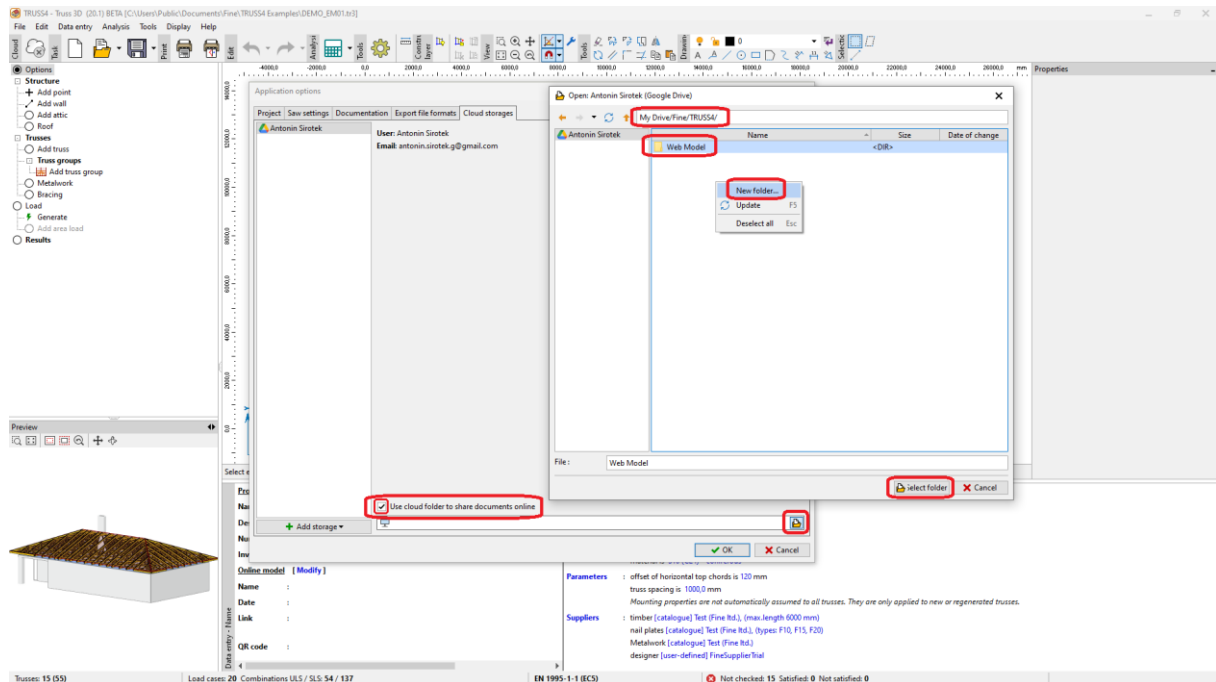
English (United States)

[Help](#) [Privacy](#) [Terms](#)

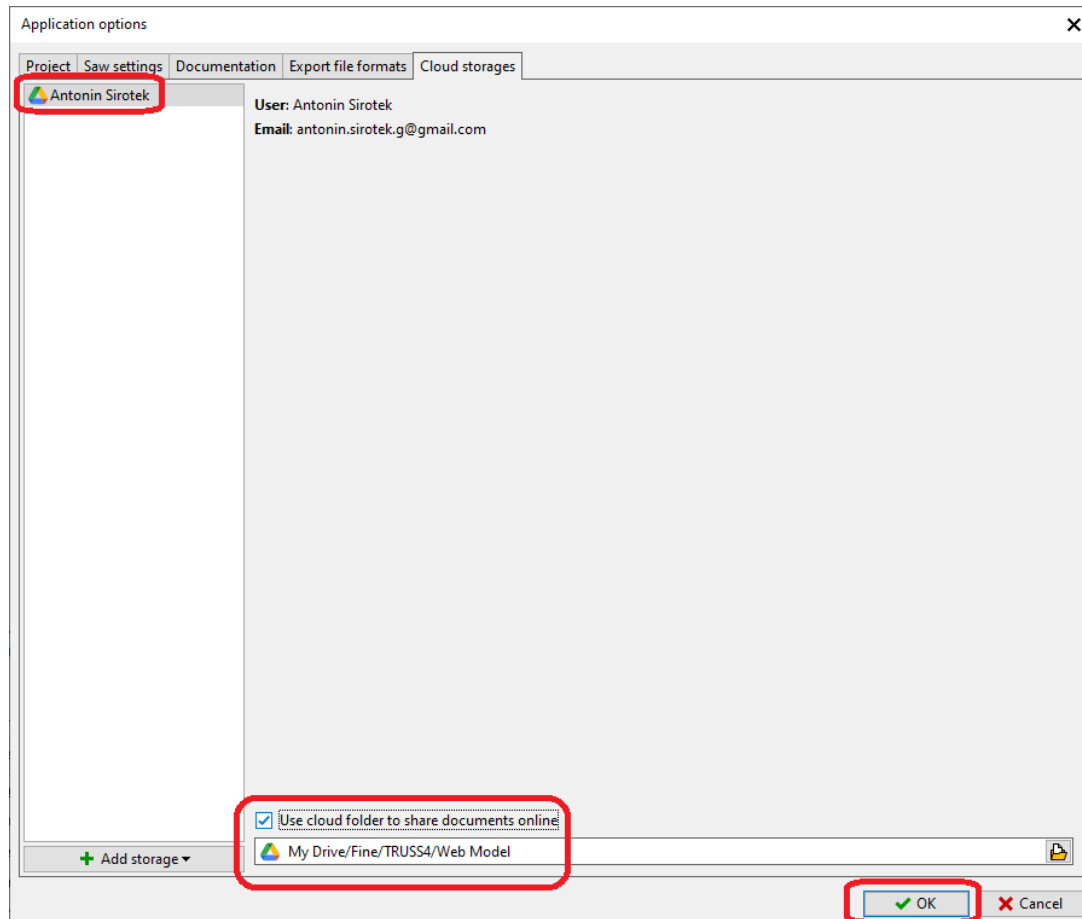
[Reference manual \(online\)](#) [Close](#)



In order for the storage you specified to be used for sharing public Online models, it is only necessary to check the option "Use cloud folder to share documents online" in the properties of the storage and choose or create a folder where the models are to be stored.

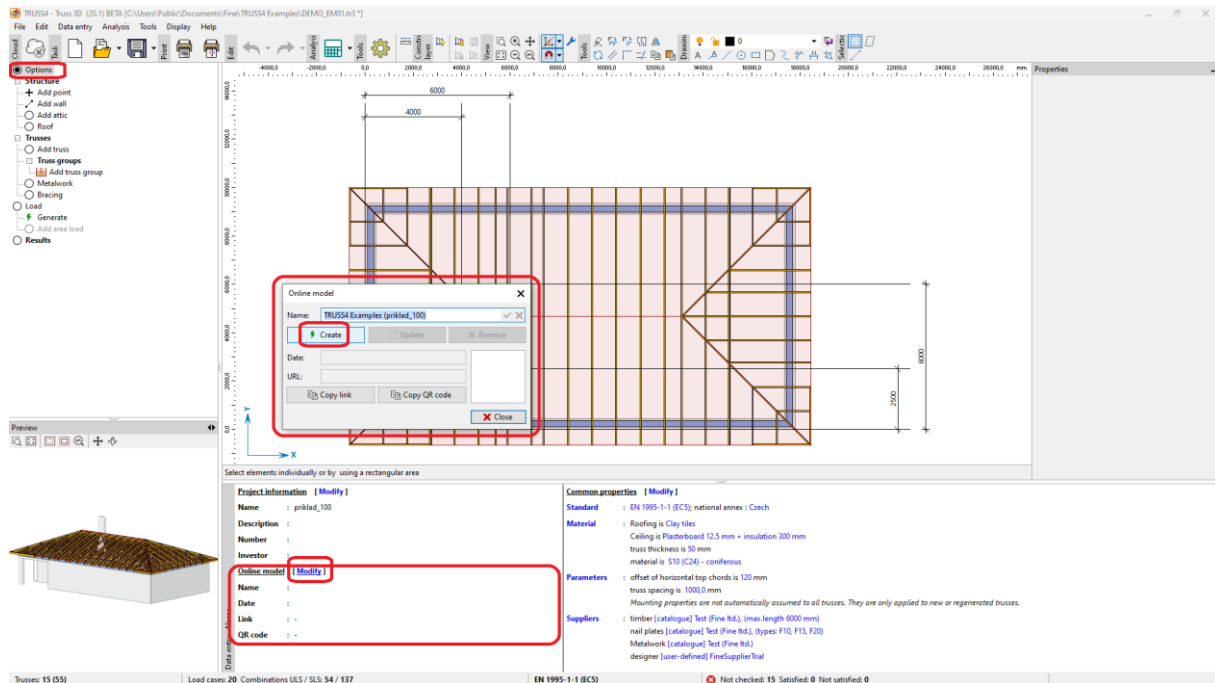


We save the proper cloud storage settings by pressing the "OK" button and close the "Application options" window.



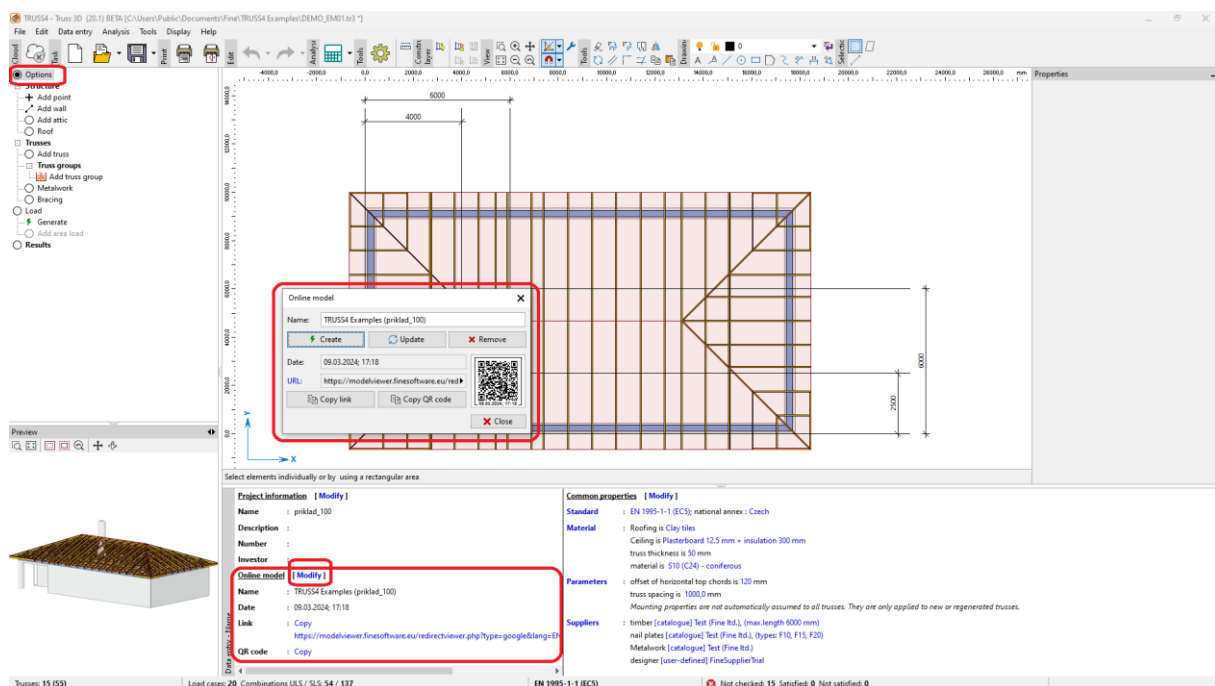
Creation and management of the Online model

The actual creation of the Online model takes place on the basic screen of the program ("Options" node of the control tree) using a dialog window that can be called up by the "Modify" link in the "Online model" section in the lower entry frame of the program.

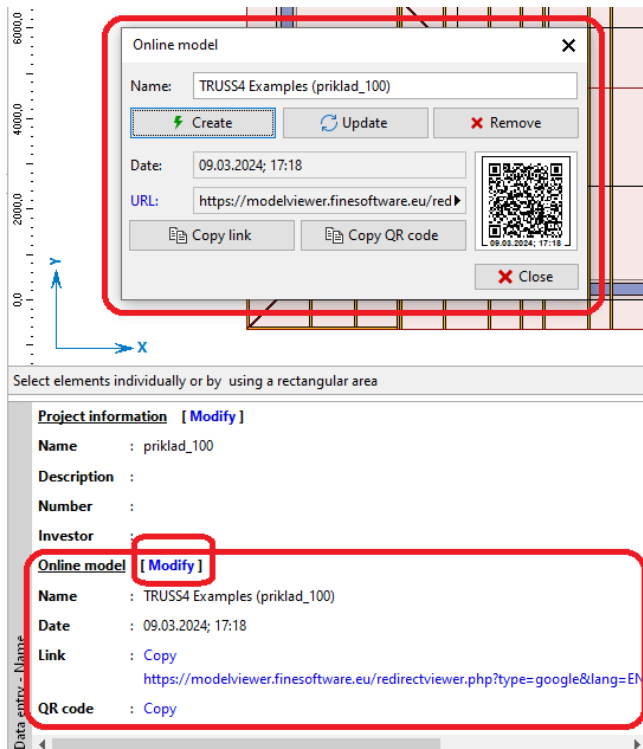


In the "Online model" window, it is possible to edit the displayed name of the Online model and then upload the model to the website by pressing the "Create" button.

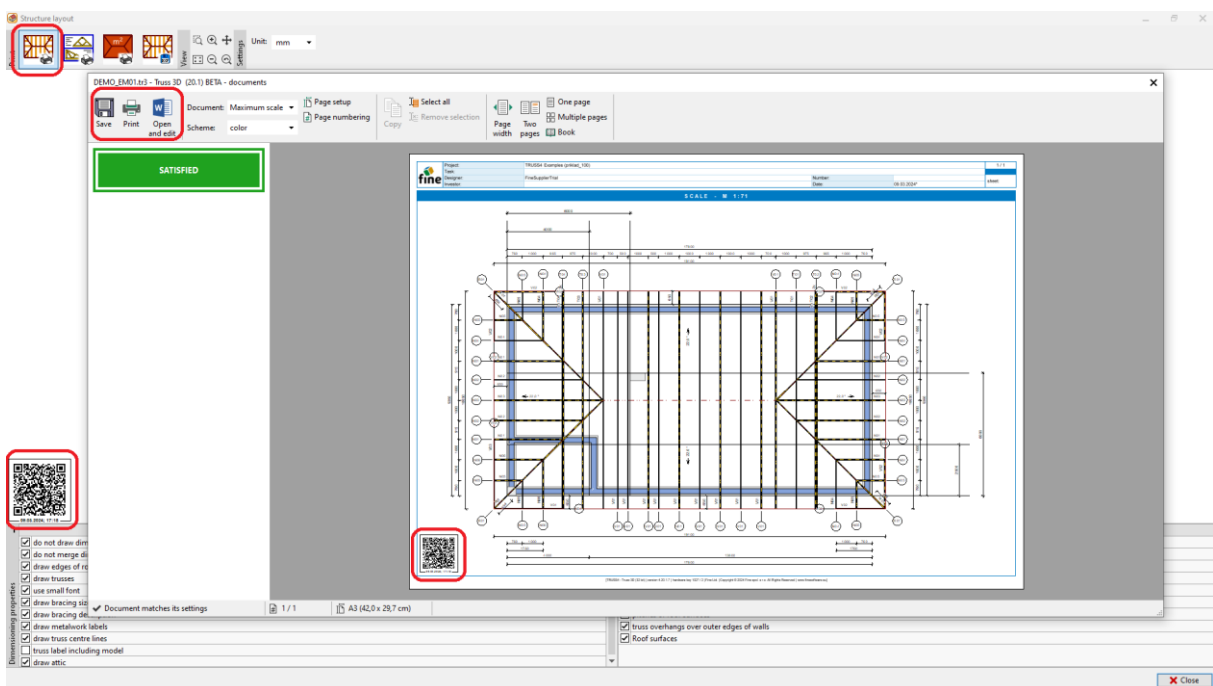
This will generate a unique web link and the corresponding QR code, displayed in a window with the option to copy to the clipboard.



For subsequent work, you can use the "Update" button, which will update the model while maintaining the original link. The "Delete" button deletes the data of the last active Online model and thus the web link becomes non-functional over time. If you repeatedly choose "Create" (if the Online model exists), the original model and its web link will remain functional and a new model will be created with a new web link. Older models can be removed by the user by deleting the relevant files in the cloud storage.



If there is a Online model for the given project, then a web link is inserted into the lower left corner of the drawing via a QR code.



For more examples visit <https://www.fine.cz/>.